

WELCOME TO THE FUTURE OF CYBER SECURITY

1400 SECURITY GATEWAYS



Fast. Simple. Secure.

Check Point 1400 Security Gateways are high performance, integrated devices offering firewall, VPN, antivirus, application visibility and control, URL filtering, email security and SandBlast Zero-Day Protection, all in compact form factors that are simple to configure and manage.



R30.10

Choose Check Point for Your Branch Office Security Solution



Secure

Comprehensive security, all working together to protect your organization



Powerful

Enable the strongest protections without compromising performance



Simple

Central management for ease of deployment and use

WELCOME TO THE FUTURE OF CYBER SECURITY

SPOTLIGHT

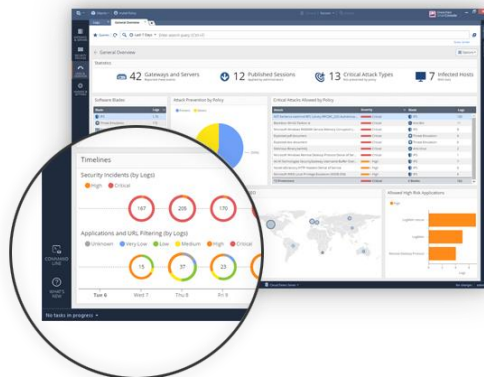
Advanced security, uncompromising performance

The Check Point 1400 Security Appliance family is a simple, affordable and easy to deploy all-in-one solution for delivering industry leading security to protect the weakest link in your enterprise network—the remote branch offices.

Protect against cyber threats with Check Point Threat Prevention all in a quiet, compact desktop form factor. Setup is done in minutes using our step-by-step configuration wizard. The 1400 Security Gateways are manageable centrally by means of the Check Point enterprise Security Management or Multi-Domain products. Available in two appliances, the 1430/1450 and the 1470/1490, these appliances come standard with eight (8) 1-Gigabit or sixteen (16) Ethernet ports respectively. Connect securely from any device directly or through secure authenticated Wi-Fi.

Comprehensive Protection

- ❖ Next Generation Firewall
- ❖ IPsec and SSL VPN
- ❖ Application Control and Web Filtering
- ❖ Intrusion Prevention
- ❖ Antivirus
- ❖ Anti-Bot
- ❖ Anti-Spam
- ❖ SandBlast Threat Emulation (sandboxing)

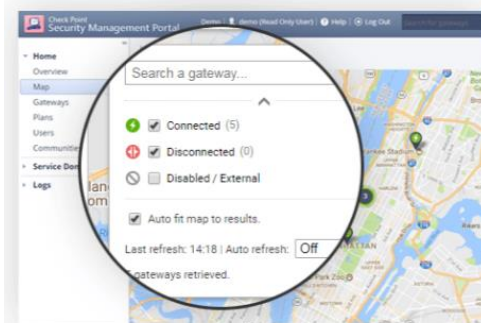


Centrally Managed with Full Threat Visibility

With one console, security teams can manage all aspects of security from policy to threat prevention – across the entire organization – on both physical and virtual environments. Consolidated management means increased operational efficiency.

Rapid Deployment

Easily manage the initial deployment of 1400 Security Appliances with the Zero Touch Cloud Service. Administrators apply the initial deployment configuration in the Zero Touch portal. When a gateway is connected to the internet for the first time, it fetches the settings automatically. The Zero Touch Cloud service also supports a REST API where you can further automate gateway provisioning.



STEP UP TO 5TH GENERATION CYBER SECURITY

Gen V security leaves the patch work and best-of-breed deployments of the past behind. Instead, it's characterized by an architecture that unifies all networks, cloud, and mobile, and supported by real time threat intelligence.



1430/1450 (Wi-Fi DSL options)

- 1 802.11n/ac wireless (optional)
- 2 6x 1GbE LAN ports
- 3 1x 1GbE DMZ port
- 4 1x 1GbE WAN port
- 5 RJ-45/micro USB Console port
- 6 DSL port
- 7 12V power connector
- 8 USB port

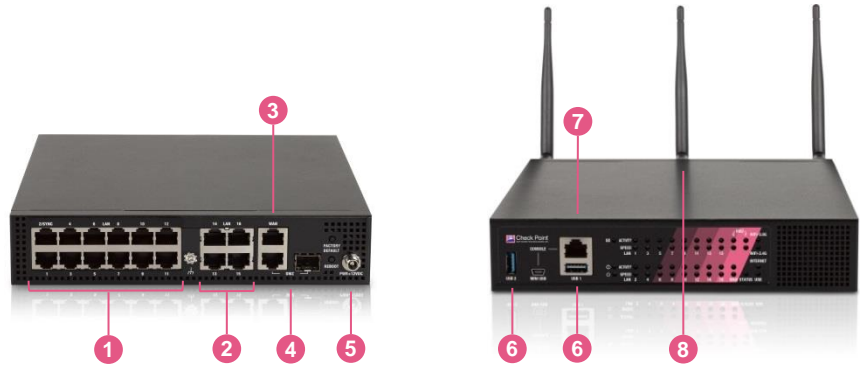


	1430	1450
Ideal Testing Conditions		
Firewall 1518 Byte UDP Packets (Mbps)	2,000	2,500
IPS Throughput (Mbps)	325	575
NGFW Throughput (Mbps) ¹	300	490
Threat Prevention (Mbps) ²	225	400
VPN AES-128 Throughput (Mbps)	275	500
Connections per Second	20,000	27,000
Concurrent Connections	500,000	500,000
Real-World Production Conditions		
Firewall Throughput (Mbps)	900	1,100
IPS Throughput (Mbps)	175	225
NGFW Throughput (Mbps) ¹	100	210
Threat Prevention (Mbps) ²	90	150
Software		
Security	Firewall, VPN, User Awareness, QoS, Application Control, URL Filtering, IPS, Anti-Bot, Antivirus, Anti-Spam and SandBlast Threat Emulation (sandboxing)	
Unicast, Multicast Routing	OSPFv2, BGPv4 and 4+, RIP, PIM (SM, DM, SSM), IGMP	
Mobile Access User License	100 in default package, 150 maximum	100 in default package, 150 maximum
Hardware		
WAN	1x 10/100/1000Base-T RJ-45 port	
DMZ	1x 10/100/1000Base-T RJ-45 port	
LAN Switch	6x 10/100/1000Base-T RJ-45 ports	
Wi-Fi (optional)	802.11 b/g/n/ac MIMO 3x3	
Radio Band (association rate)	1 radio band: 2.4Ghz (max 450 Mbps) or 5Ghz (max 1300 Mbps)	
Console Port	1x RJ-45, 1x Mini USB	
USB Port	1x USB 3.0	
SD Card Slot	Micro SDHC slot	
3G/4G Modem Support	Yes	
DSL (optional)	VDSL: G.993.1 (VDSL), G.993.2 (VDSL2), G.993.5 (VDSL2 Vectoring), G.998.4 (G.INP) VDSL2 profiles: 8a, 8b, 8c, 8d, 12a, 12b, and 17a ADSL: Annex A (POTS), Annex B (ISDN), G.992.1 (ADSL), G.992.3 (ADSL2), G.992.5 (ADSL2+), Annex M (ADSL2/2+) ,Annex L Reach-extended (ADSL2) Dying Gasp, DSL Forum TR-067, TR-100, TR-114 Conformity	
Dimensions		
Enclosure	Desktop	
Dimensions WxHxD	210 x 42.5 x 155 mm, 8.3 x 1.7 x 6.1 in.	
Weight	1.3 kg (2.8 lbs.)	
Environment		
Operating / Storage	0°C ~ 40°C / -45°C ~ 60°C (5~95%, non-condensing)	
Power Requirements		
AC Input	110 – 240V, 50 – 60 Hz	
Power Supply Rating	12V/3.33A 40W desktop adaptor	
Power Consumption (Max)	25W (non-Wi-Fi), 30W (Wi-Fi option)	
Heat Dissipation	85.3 BTU/hr (non-Wi-Fi), 102.4 BTU/hr (Wi-Fi option)	
Certifications		
Safety / Emissions / Environment	UL/c-UL, IEC 60950 CB / EMC: EN55022 Class B, FCC: Part 15 Class B / RoHS, REACH, WEEE	

¹ Includes Firewall, Application Control and IPS ² Includes Firewall, Application Control, URL Filtering, IPS, Antivirus, Anti-Bot and SandBlast Zero-Day Protection

1470/1490 (PoE and Wi-Fi options)

- 1 12x 1GbE LAN ports
- 2 4x PoE 1GbE LAN ports (PoE option)
- 3 1x 1GbE WAN port
- 4 1x 1GbE copper/fiber DMZ port
- 5 12V power connector
- 6 2x USB ports
- 7 RJ-45/micro USB console port
- 8 802.11n/ac (Wi-Fi option)



	1470	1490
Ideal Testing Conditions		
Firewall 1518 Byte UDP Packets (Mbps)	3,200	4,000
IPS Throughput (Mbps)	700	800
NGFW Throughput (Mbps) ¹	625	800
Threat Prevention (Mbps) ²	500	550
VPN AES-128 Throughput (Mbps)	500	1,000
Connections per Second	30,000	40,000
Concurrent Connections	500,000	500,000
Real-World Production Conditions		
Firewall Throughput (Mbps)	1,600	1,800
IPS Throughput (Mbps)	285	375
NGFW Throughput (Mbps) ¹	240	310
Threat Prevention (Mbps) ²	175	220
Software		
Security	Firewall, VPN, User Awareness, QoS, Application Control, URL Filtering, IPS, Anti-Bot, Antivirus, Anti-Spam and SandBlast Threat Emulation (sandboxing)	
Unicast, Multicast Routing	OSPFv2, BGPv4 and 4+, RIP, PIM (SM, DM, SSM), IGMP	
Mobile Access User License	200 in default package, 300 maximum	200 in default package, 300 maximum
Hardware		
WAN	1x 10/100/1000Base-T RJ-45 port	
DMZ	1x 10/100/1000Base-T RJ-45 / 1x 1000BaseF SFP (transceiver not included) port	
LAN Switch	16x 10/100/1000Base-T RJ-45 ports (total)	
PoE Ports (optional)	4x 10/100/1000Base-T RJ-45 out of the 16 LAN ports	
Wi-Fi (optional)	802.11 b/g/n and 802.11 n/ac MIMO 3x3	
Radio Band (association rate)	2 concurrent: 2.4Ghz (max 450 Mbps) and 5Ghz (max 1300 Mbps)	
Console Port	1x RJ-45, 1x Mini USB	
USB Port	2x USB 3.0	
SD Card Slot	Micro SDHC slot	
3G/4G Modem Support	Yes	
Dimensions		
Enclosure	Desktop	
Dimensions WxHxD	210 x 42.5 x 200.5 mm, 8.3 x 1.7 x 7.9 in.	
Weight	1.6 kg (3.6 lbs.)	
Environment		
Operating / Storage	0°C ~ 40°C / -45°C ~ 60°C (5~95%, non-condensing)	
Power Requirements		
AC Input	110 – 240V, 50 – 60 Hz	
Power Supply Rating	12V/5.4A 65W, 12V/12.5A 150W (PoE option)	
Total Available PoE Power	Max load on each 4x PoE ports: 15.4 W (802.3af), or use only 2x PoE ports with max load of 31W (802.3at) each	
Power Consumption (Max)	55W (wired), 60W (Wi-Fi option), 130W (PoE option)	
Heat Dissipation	187.7 BTU/hr (wired), 204.7 BTU/hr (Wi-Fi option), 443.6 BTU/hr (PoE option)	
Certifications		
Safety/Emissions/Environment	UL/c-UL, IEC 60950 CB / EMC: EN55022 Class B, FCC: Part 15 Class B / RoHS, REACH, WEEE	

¹ Includes Firewall, Application Control and IPS ² Includes Firewall, Application Control, URL Filtering, IPS, Antivirus, Anti-Bot and SandBlast Zero-Day Protection

ORDERING INFORMATION

WI-FI or WI-FI +DSL (1430/1450) APPLIANCE OPTION (replace –xx in the SKU to specify the Wi-Fi region) ¹			
1430 Security Appliance with Threat Prevention security suite			CPAP-SG1430-NGTP-W or WDSL-xx
1430 Security Appliance with Threat Prevention security suite and SandBlast			CPAP-SG1430-NGTX-W or WDSL-xx
1450 Security Appliance with Threat Prevention security suite			CPAP-SG1450-NGTP-W or WDSL-xx
1450 Security Appliance with Threat Prevention security suite and SandBlast			CPAP-SG1450-NGTX-W or WDSL-xx
1470 Security Appliance with Threat Prevention security suite			CPAP-SG1470-NGTP-W-xx
1470 Security Appliance with Threat Prevention security suite and SandBlast			CPAP-SG1470-NGTX-W-xx
1490 Security Appliance with Threat Prevention security suite			CPAP-SG1490-NGTP-W-xx
1490 Security Appliance with Threat Prevention security suite and SandBlast			CPAP-SG1490-NGTX-W-xx
POWER OVER ETHERNET (PoE) APPLIANCE OPTION ¹			
1470 Security Appliance with Threat Prevention security suite, Wired, PoE			CPAP-SG1470-NGTP-PoE
1470 Security Appliance with Threat Prevention security suite and SandBlast, Wired, PoE			CPAP-SG1470-NGTX-PoE
1490 Security Appliance with Threat Prevention security suite, Wired, PoE			CPAP-SG1490-NGTP-PoE
1490 Security Appliance with Threat Prevention security suite and SandBlast, Wired, PoE			CPAP-SG1490-NGTX-PoE
WIRED APPLIANCE ¹			
1430 Security Appliance with Threat Prevention security suite			CPAP-SG1430-NGTP
1430 Security Appliance with Threat Prevention security suite and SandBlast			CPAP-SG1430-NGTX
1450 Security Appliance with Threat Prevention security suite			CPAP-SG1450-NGTP
1450 Security Appliance with Threat Prevention security suite and SandBlast			CPAP-SG1450-NGTX
1470 Security Appliance with Threat Prevention security suite			CPAP-SG1470-NGTP
1470 Security Appliance with Threat Prevention security suite and SandBlast			CPAP-SG1470-NGTX
1490 Security Appliance with Threat Prevention security suite			CPAP-SG1490-NGTP
1490 Security Appliance with Threat Prevention security suite and SandBlast			CPAP-SG1490-NGTX
WI-FI REGIONS (replace –xx in the SKU to specify the Wi-Fi region)			
USA, Canada	add -US	Israel	add –IL
Europe	add -EU	China	add –CN
Japan	add -JP	India, Chile	add –IN
Australia, Argentina	add -AU	New Zealand	add –NZ
Latin America, Singapore, Hong Kong, Thailand, Sri-Lanka	add -LA		

¹ Threat Prevention includes IPS, Application Control, URL Filtering, Antivirus, Anti-Bot, and Anti-Spam updates for the first year; SandBlast includes Threat Emulation (sandboxing).

EXTEND YOUR SOLUTION

SECURITY SERVICE EXTENSION ¹	
Next Generation Threat Prevention Blades Package for 1 year for 14x0 Appliance	CPSB-NGTP-14x0-1Y
Next Generation Threat Prevention Blades Package and SandBlast for 1 year for 14x0 Appliance	CPSB-NGTX-14x0-1Y
ADDITIONAL SOFTWARE BLADES ²	
Mobile Access Blade for 50 concurrent connections	CPSB-MOB-50

¹ NGTP and NGTX SKUs for 2 and 3 years are available, see the online Product Catalog

² The base packages include a license for 100 (1430/1450) and 200 (1470/1490) concurrent Mobile Access users. The MOB license is additive.

ACCESSORIES	
SFP short range transceiver (for the DMZ 1000BaseF port)	CPAC-TR-1SX-1200R
SFP long range transceiver (for the DMZ 1000BaseF port)	CPAC-TR-1LX-1200R
SD memory card 8 GB	CPAC-8GB-SD-1200R
SD memory card 32 GB	CPAC-32GB-SD-1200R
1400 appliance single/dual chassis rack shelf kit	CPAC-RM-700/1400
Additional/Replacement AC Power Supply for 770, 790, 1470 and 1490 appliances	CPAC-PSU-790/1490

CONTACT US

 EMAIL: INFO@CHECKPOINT.COM

 WEB: WWW.CHECKPOINT.COM